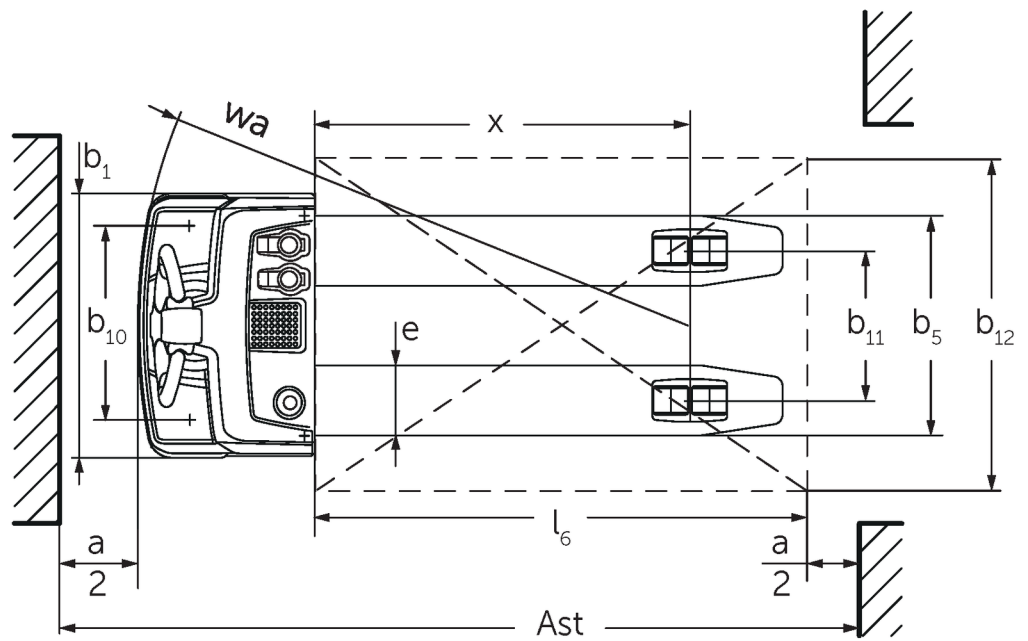
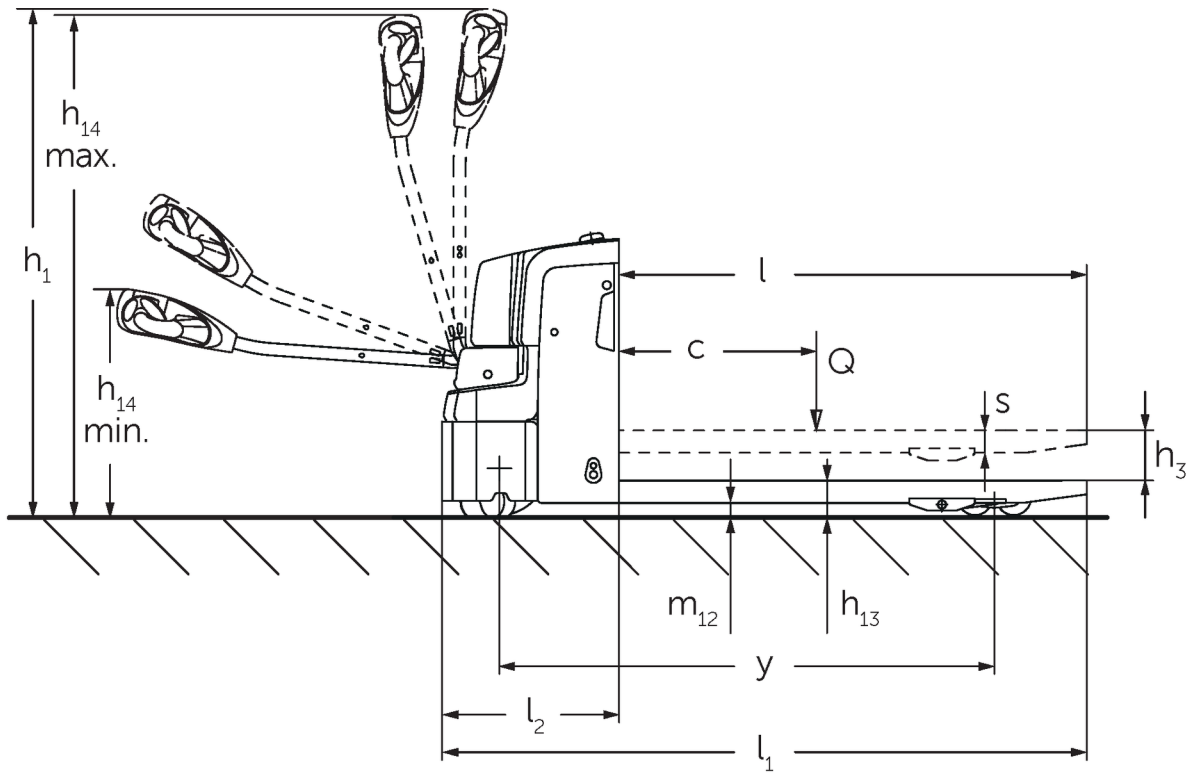




Electric pedestrian pallet truck **EJE M13 / M15**

Lift height: 120 mm / Load capacity: 1300-1500 kg

EJE M13 / M15



Characteristic	1.1	Manufacturer (abbreviated description)	Jungheinrich									
	1.2	Manufacturer's type designation	EJE M13	EJE M13 with weighing function	EJE M13	EJE M15 with weighing function	EJE M15					
	1.3	Drive	Electric									
	1.4	Operation	Pedestrian									
	1.5	Load capacity/load	Q	1300			1500					
	1.6	Load centre distance	c	600								
	1.8	Load distance, centre of drive axle to fork	x	914	894	914	894	914	764	914	764	
	1.9	Wheelbase	y	1212				1062	1212	1062		
Weights	2.1.1	Service weight (incl. battery)	kg	219	244	219	244	219				
	2.2	Axle load laden front/rear	kg	703 / 816	735 / 809	703 / 816	730 / 1014	700 / 1019				
	2.3	Axle load unladen front/rear	kg	166 / 53	176 / 68	166 / 53	176 / 68	166 / 53				
Wheels/suspension system	3.1	Tyres	TPU/PU									
	3.2	Tyre size, front	Ø230x65									
	3.3	Tyre size, rear	Ø80x70									
	3.4	Additional wheels	2 x Ø80x40									
	3.5	Wheels, number front/back (x=driven)	1x+2/4									
	3.6	Tread width, front	b ₁₀	460								
	3.7	Tread width, rear	b ₁₁	368								
Basic dimensions	4.4	Lift (h ₃)	h ₃	120								
	4.9	Height of tiller handle in drive position min./max.	mm	740 / 1190								
	4.15	Height, lowered	h ₁₃	85	90	85	90	85				
	4.19	Overall length	l ₁	1585	1605	1585	1605	1585	1435	1585	1435	
	4.20	Length including fork shank	l ₂	435	455	435	455	435				
	4.21.1	Overall width	b ₁	650		670	650			670		
	4.22	Fork dimensions	s/ e/l	55 / 172 / 1150	60 / 182 / 1150		55 / 172 / 1150	60 / 182 / 1150	55 / 172 / 1150	55 / 172 / 1000	55 / 172 / 1150	55 / 172 / 1000
	4.25	Width across forks	b ₅	540	550	670	550	540		670		
	4.32	Ground clearance centre of wheelbase	m ₂	35								
	4.34	Aisle width (pallet 1000x1200 sideways)	A _{st}	1643	1663	1643	1663	1643	1493	1643	1493	
	4.34.1	Aisle width (pallet 800x1200 length)	A _{st}	1843	1863	1843	1863	1843	1693	1843	1693	
	4.35	Turning radius	W _s	1357				1207	1357	1207		
Performance data	5.1	Travel speed laden/unladen	km/h	4.5 / 5								
	5.2	Lift speed laden/unladen	m/s	0.05 / 0.06								
	5.3	Lowering speed laden/unladen	m/s	0.08 / 0.04								
	5.8	Max. gradeability laden/unladen	%	4 / 10								
	5.10	Service brake		electric								

E-motor/Electronics	6.1	Drive motor, performance S2 60 min	kW	0.6	
	6.2	Lift motor, performance with S3	kW	1.2	
	6.3	Battery according to DIN 43531/35/36		no	
	6.4	Battery voltage/nominal capacity	V / Ah	24 / 65	24 / 90
	6.5	Battery weight	kg	35	53
	6.6	Energy consumption according to VDI cycle	kWh/h	0.24	0.27
	6.6.1	Energy consumption according to EN cycle	kWh/h	0.24	0.27
	6.6.2	CO2 equivalent as per EN 16796	kg/h	0.1	
Other	8.1	Type of drive control		AC	
	10.7	Sound level as per EN12053, operator's ear	dB (A)	66	

- This data sheet according to VDI guideline 2198 only states the technical values of the standard truck. Different tyres, other masts, additional equipment etc. may result in different values.

The German production facilities in
Norderstedt, Moosburg and Landsberg
are certified.

ISO 9001
ISO 14001

Jungheinrich fork lift trucks meet
European safety requirements.



 **JUNGHEINRICH**

The logo features a red upward-pointing arrow integrated into the letter 'J' of the word 'JUNGHEINRICH', which is written in a bold, black, sans-serif font.